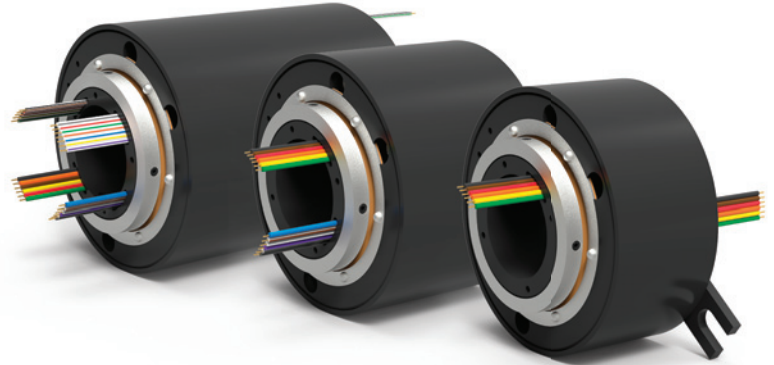


EST Series: Overview

- + 1.5" Inch Thru-bore for Shaft Mounting
- + Splash Seals for Dust and Moisture
- + Unique Fiber Brush Contact Technology
- + Low Contact Force per Fiber
- + Transfers Analog and Digital Signals
- + Low Electrical Noise
- + Data Speeds Under 50 Megabits / Sec.*
- + Compatible With a Range of Data Bus Protocols



The EST Series electrical through bore slip ring is a rotating assembly used to transfer power, control circuits or data (analog / digital) from stationary inlets to rotating outlets.

EST Series slip rings feature a 1.5 inch [38.1 mm] through bore for shaft mounting and incorporate low-wear, fiber brush contacts that do not require lubrication producing virtually no wear debris. Standard models are available from 6 to 24 circuits.

SPECIFICATIONS	
Operating Speed (max.)	250 RPM Continuous
Data Speed (max.)	Under 50 Mbps (non-Ethernet)*
Standard Circuit Options	6, 12, 18, 24
Voltage [AC/DC] (max.)	600
Amps	10
Lead Gauge (AWG)	16
Wire Material	Tin-Plated Copper
Electrical Noise (max.)	100 Milliohms
Contact Material	Silver
Temperature Range	-40 °F to 176 °F (-40 °C to +80 °C)

* In order to successfully transfer digital data signals, a variety of conditions must be met. Please consult with DSTI for approval. For the most reliable transfer of digital data signals, see our Ethernet slip ring options.



PRODUCT DOWNLOADS

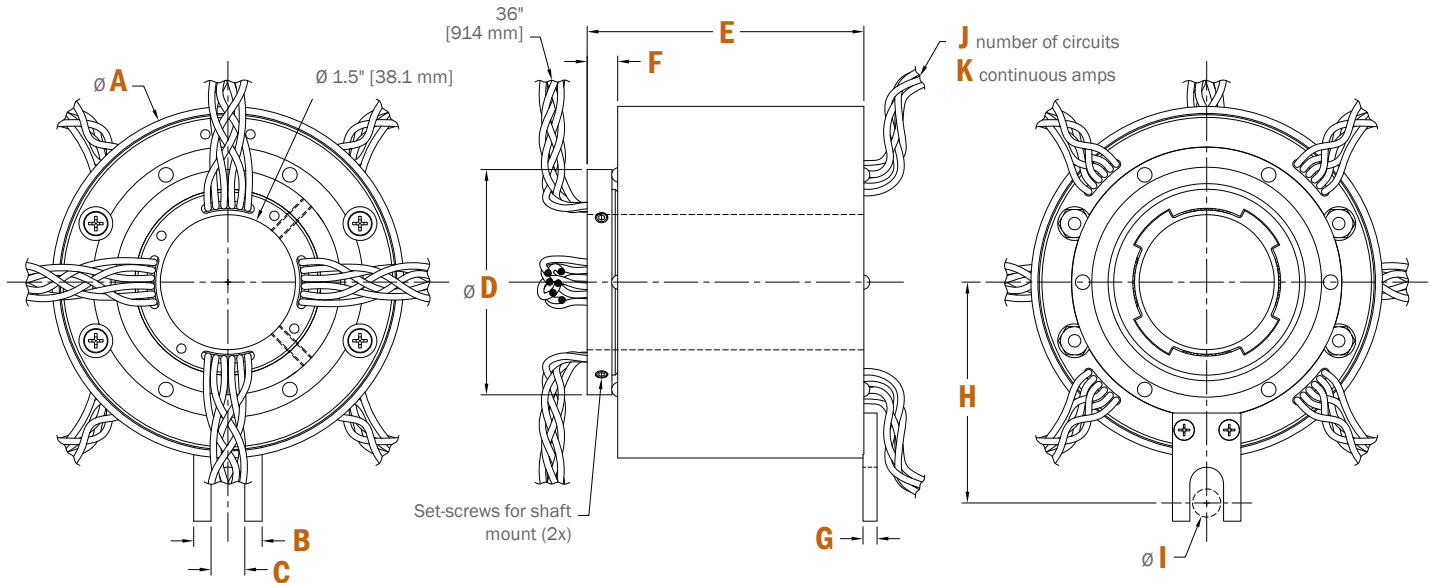
For Catalogs, Brochures, Models and Drawings visit www.dsti.com/downloads



DID YOU KNOW?

DSTI slip rings can be purchased online at store.dsti.com

EST Series: Dimensions



	EST6	EST12	EST18	EST24
A	3.90" [99.06mm]	3.90" [99.06mm]	3.90" [99.06mm]	3.90" [99.06mm]
B	.76" [19.30 mm]	.76" [19.30 mm]	.76" [19.30 mm]	.76" [19.30 mm]
C	.375" [9.53mm]	.375" [9.53mm]	.375" [9.53mm]	.375" [9.53mm]
D	2.5" [63.50mm]	2.5" [63.50mm]	2.5" [63.50mm]	2.5" [63.50mm]
E	2.13" [54.10mm]	3.07" [77.98mm]	4.01" [101.85mm]	4.94" [125.48mm]
F	.34" [8.64mm]	.34" [8.64mm]	.34" [8.64mm]	.34" [8.64mm]
G	.15" [3.81mm]	.15" [3.81mm]	.15" [3.81mm]	.15" [3.81mm]
H	2.45" [62.23mm]	2.45" [62.23mm]	2.45" [62.23mm]	2.45" [62.23mm]
I	.313" [7.95mm]	.313" [7.95mm]	.313" [7.95mm]	.313" [7.95mm]
J	6 Circuits	12 Circuits	18 Circuits	24 Circuits
K	10 Amps	10 Amps	10 Amps	10 Amps

Wiring Color Codes: EST Series

EST6		
Tag #	Color	Description/Awg
1	BLK	10A/16
2	BRN	
3	RED	
4	ORN	
5	YEL	
6	GRN	

EST12		
Tag #	Color	Description/Awg
1	BLK	10A/16
2	BRN	
3	RED	
4	ORN	
5	YEL	
6	GRN	
7	BLU	
8	VIO	
9	GRY	
10	WHT	
11	WHT-BLK	
12	WHT-BRN	

EST18		
Tag #	Color	Description/Awg
1	BLK	10A/16
2	BRN	
3	RED	
4	ORN	
5	YEL	
6	GRN	
7	BLU	
8	VIO	
9	GRY	
10	WHT	
11	WHT-BLK	
12	WHT-BRN	
13	WHT-RED	
14	WHT-ORN	
15	WHT-YEL	
16	WHT-GRN	
17	WHT-BLU	
18	WHT-VIO	

EST24		
Tag #	Color	Description/Awg
1	BLK	10A/16
2	BRN	
3	RED	
4	ORN	
5	YEL	
6	GRN	
7	BLU	
8	VIO	
9	GRY	
10	WHT	
11	WHT-BLK	
12	WHT-BRN	
13	WHT-RED	
14	WHT-ORN	
15	WHT-YEL	
16	WHT-GRN	
17	WHT-BLU	
18	WHT-VIO	
19	WHT-GRY	
20	WHT-BLK-BRN	
21	WHT-BLK-RED	
22	WHT-BLK-ORN	
23	WHT-BLK-YEL	
24	WHT-BLK-GRN	