

# MPU SERIES CONNECTOR

## Specifications ● ● ●

### PRESSURE:

Vacuum to 35 psi, 2.4 bar

### TEMPERATURE:

-40°F to 300°F (-40°C to 149°C)

### MATERIALS:

#### Main components:

Polysulfone (amber tint), USP Class VI, ADCF

**O-rings:** Silicone (clear), platinum-cured, USP Class VI, ADCF

### STERILIZATION:

**Gamma:** Up to 50 kGy irradiation

**Autoclave:** Up to 270°F (132°C) for 60 minutes, up to 25 repetitions. Sterilize uncoupled only.

### TUBING SIZES: 3/4" ID (19.0 mm)

**WARNING:** Pressure, temperature, chemicals, and operating environment can affect the performance of couplings. It is the customer's responsibility to test the suitability of CPC's products in their own application conditions.

**The MPU's twist-to-connect design** features an easy-to-use locking mechanism that guards against accidental disconnects and provides a reliable, secure connection. A 3/4" hose barb provides smooth, rapid media transfer.

## FEATURES

3/4" hose barb

Locking feature

Sharp barb end

Shrouded, leak-free seal & smooth, internal flow path

ADCF-free materials

## BENEFITS

Facilitates rapid fill and empty of bioprocessing bags

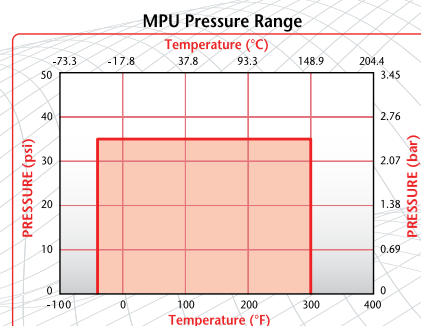
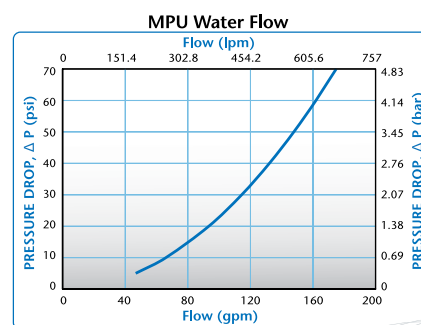
Guards against accidental disconnects

Minimizes fluid turbulence and dead space

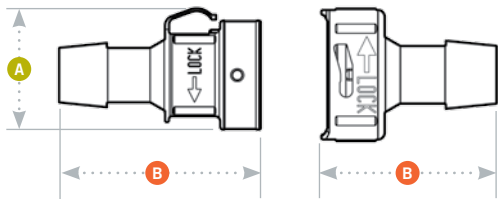
Protect valuable fluids and eliminate potential to contaminate fluid path

Meet BSE/TSE requirements

These graphs are intended to give you a general idea of the performance capabilities of each product line. The shaded area of each graph represents the operating range of the product family, i.e., upper and lower values are shown. Therefore, depending on the exact coupling configurations selected, you can reasonably expect values to fall within the shaded area.




# MPU SERIES CONNECTOR DIMENSIONS




**A** = Height/Diameter  
**B** = Total Length



## Coupling Bodies • POLYSULFONE

	<b>TERMINATION</b> IN-LINE HOSE BARB	<b>TUBING</b> 3/4" ID	<b>METRIC EQ.</b> 19.0mm ID	<b>FLOW</b> .71"	<b>STRAIGHT THRU</b> MPU171239	<b>A</b> 1.75 (44.5)	<b>B</b> 2.37 (60.2)

## Coupling Inserts • POLYSULFONE

	<b>TERMINATION</b> IN-LINE HOSE BARB	<b>TUBING</b> 3/4" ID	<b>METRIC EQ.</b> 19.0mm ID	<b>FLOW</b> .71"	<b>STRAIGHT THRU</b> MPU221239M	<b>O-RING</b> Silicone Seal USP Class VI	<b>A</b> 1.56 (39.6)	<b>B</b> 2.88 (73.2)

## Accessories • POLYSULFONE

	<b>SEALING CAP</b> MPU32039		<b>MATERIAL</b> Polysulfone USP Class VI	<b>A</b> 1.75 (44.5)	<b>B</b> .79 (20.1)
	<b>SEALING PLUG</b> MPU30039M	<b>O-RING</b> Silicone Seal	<b>MATERIAL</b> Polysulfone USP Class VI	<b>A</b> 1.56 (39.6)	<b>B</b> 1.38 (35.1)

All measurements are in inches (millimeters) unless otherwise noted. Tubing must meet stated inside and outside diameters.

美国CPC\_Colder Products Company快速接头和连接器  
 授权西北代理商联系方式

西安嘉岳自动化技术有限公司 Garye Automation Company  
 地址：西安市未央区未央大道138-1号中登大厦A座十二层  
 电话：029 - 8647 4991 邮编：710016  
 传真：029 - 8647 3942 公司QQ:3180038393  
 手机：182 9256 1696  
 E-mail：sales@garye.cn  
 Web：http://www.garye.cn