

ASEPTIQUICK® STC CONNECTORS

AseptiQuik® STC Connectors integrate the AseptiQuik® sterile connector and the Steam-Thru® II SIP connector, giving manufacturers even greater flexibility for hybrid stainless steel and single-use processing. The AseptiQuik STC connector combines either an AseptiQuik G or AseptiQuik C sterile connector with a Steam-Thru II connection that can be mounted directly to a stainless steel vessel via a sanitary termination. AseptiQuik STC connectors utilizing an AseptiQuik G sterile connector offer a genderless design, simplifying system integration at the aseptic connector end. AseptiQuik STC connectors utilizing an AseptiQuik C sterile connector allow system designers to incorporate a keyed female-to-male connection at the aseptic connector end.

The union of the two connectors into a single unit through a sanitary clamp allows an AseptiQuik sterile connection to be steamed on to stainless equipment via SIP. After the SIP cycle, a wide range of single-use systems can be connected. The SIP process can be done in advance allowing a quick and easy sterile connection to the AseptiQuik half without having to wait 30-60 minutes for SIP prior to harvest.

Features

AseptiQuik design

Genderless design

Innovative three-port steam design

Robust construction

Patented steam valve design

Sanitary interface between the two connectors

Colder Click

Market availability

Benefits

Innovative three-step connection process reduces risk of operator error

Eases integration of single-use systems with universal mating between AseptiQuik G Connectors

Allows a true steam-through SIP process which eliminates "dead legs"

Repeatable and reliable performance with no additional hardware required

Allows sterile connection and disconnection to stainless equipment and permits a high media flow rate.

More secure connection than tubing with cable ties

Audible confirmation of assembly steps

Open access through multiple supply chain partners

AseptiQuik STC Specifications

Pressure:

Steam position: Up to 35 psi, 2.4 bar

Flow position: Up to 20 psi, 1.4 bar

Temperature:

Steam position: Up to 275°F (135°C) for 60 minutes

Flow position: 39°F to 104°F (4°C to 40°C)

Sterilization:

Gamma: Up to 50kGy irradiation

AutoClave: High Temp (HT) version:

Up to 266°F (130°C) for 30 minutes (AQSTC)

Up to 266°F (130°C) for 60 minutes (AQGSTC)

Note: A slight clockwise rotation of the clamp nut may be needed after autoclave.

Materials:

Main Components:

AseptiQuik - Polycarbonate (white), USP Class VI, ADCF

Steam-Thru II - Polysulfone (amber tint), USP Class VI, ADCF

Seals: Silicone (clear), platinum-cured, USP Class VI, ADCF

Pull Tabs:

Polycarbonate (blue, standard version), USP Class VI, ADCF

Polycarbonate (white, HT version), USP Class VI, ADCF

Caps: Polypropylene (clear), USP Class VI, ADCF

Membrane:

Polyethylene (standard version), USP Class VI, ADCF

Hydrophobic polyethersulfone (HT versions), USP Class VI

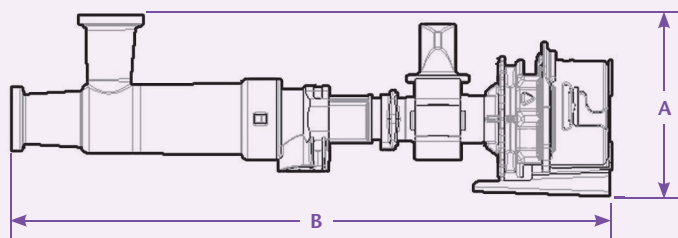
Clamp: Nylon 66 (white), USP Class VI

Note: Mates with gendered and genderless AseptiQuik connectors.

ASEPTIQUIK® STC CONNECTOR

Product Dimensions

A = Height/Diameter
B = Total Length
C = Actuated Length



Coupling Bodies

POLYCARBONATE *Standard Version with Blue Pull Tabs*



TERMINATION

3/4" X 3/4" SANITARY STEAM-THRU II
with AseptiQuik Body
3/4" X 1-1/2" SANITARY STEAM-THRU II
with AseptiQuik Body (pictured)

PART NO.

AQSTC2330900

A

2.78 (70.6 mm)

B

9.25 (235 mm)

C

8.42 (213.9 mm)

PART NO.

AQSTC2331000

2.78 (70.6 mm)

9.25 (235 mm)

8.42 (213.9 mm)

Note: Mates with any male AseptiQuik connector.

Coupling Bodies

POLYCARBONATE *HT Version with White Pull Tabs*



TERMINATION

3/4" X 3/4" SANITARY STEAM-THRU II
with AseptiQuik Body (pictured)
3/4" X 1-1/2" SANITARY STEAM-THRU II
with AseptiQuik Body

PART NO.

AQSTC2330900HT

A

2.78 (70.6 mm)

B

9.25 (235 mm)

C

8.42 (213.9 mm)

PART NO.

AQSTC2331000HT

2.78 (70.6 mm)

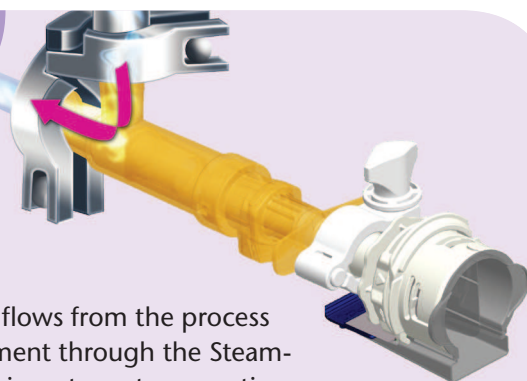
9.25 (235 mm)

8.42 (213.9 mm)

Note: Mates with any male AseptiQuik connector.

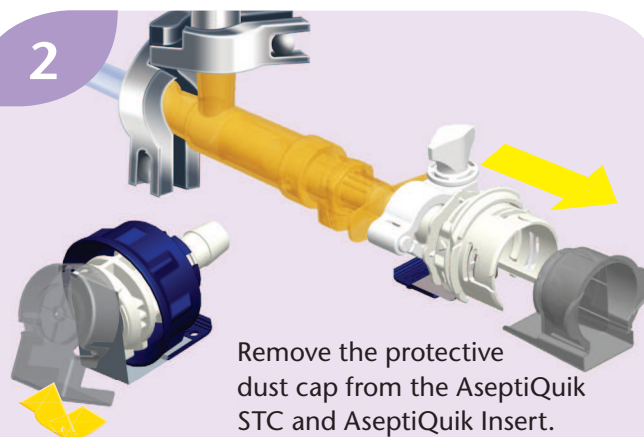
CLICK-PULL-TWIST Assembly Procedure

1



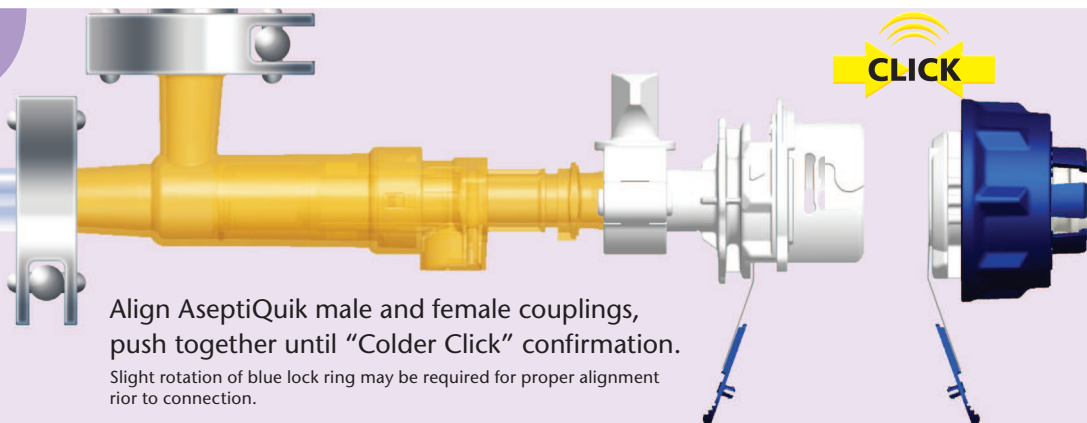
Steam flows from the process equipment through the Steam-Thru II in a steam trap creating a "steam on" sterile connection.

2



Remove the protective dust cap from the AseptiQuik STC and AseptiQuik Insert.

3

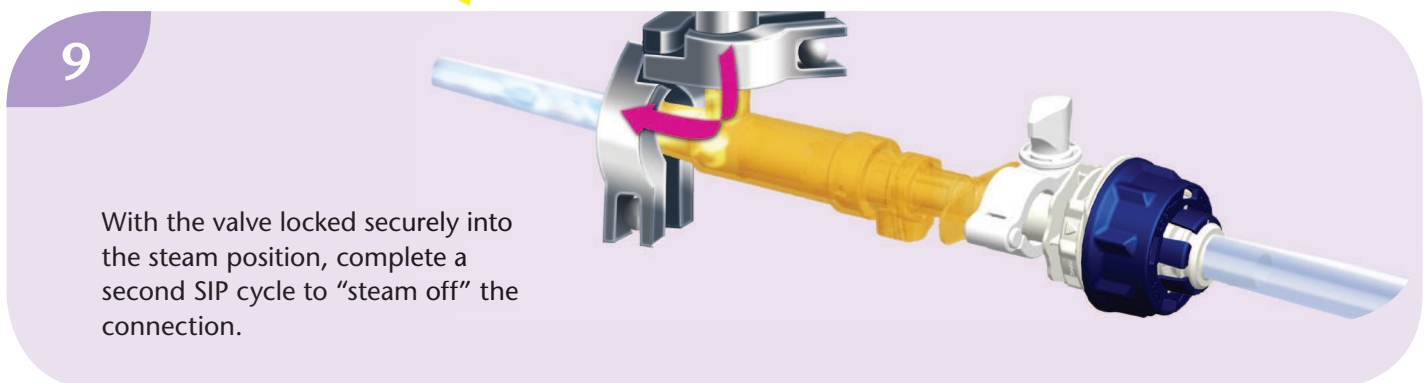
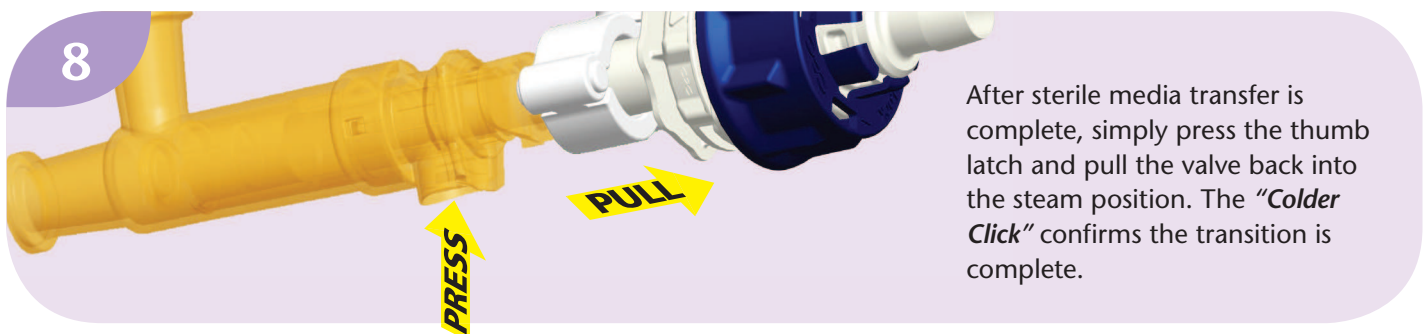
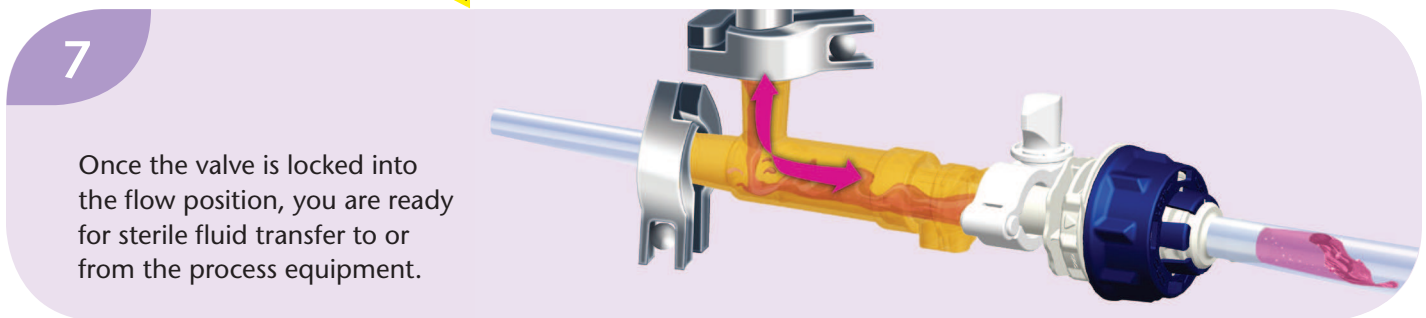
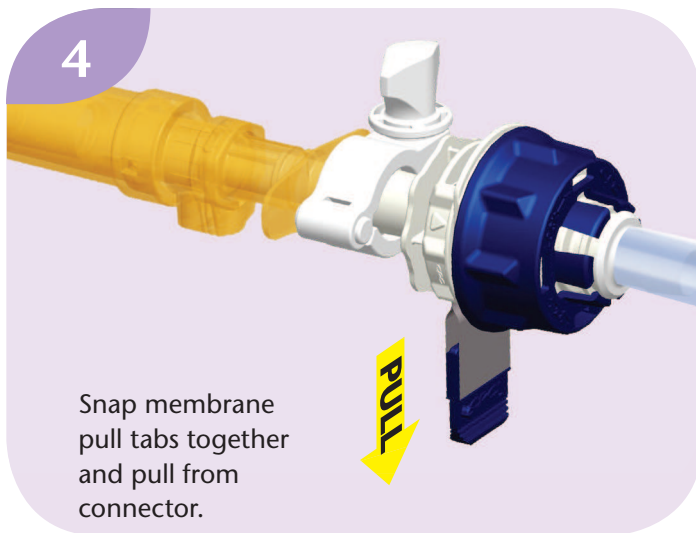


Align AseptiQuik male and female couplings, push together until "Colder Click" confirmation.

Slight rotation of blue lock ring may be required for proper alignment prior to connection.

CPC | Call toll free 1-800-444-2474 or visit us at www.colder.com

Copyright © 2014 by Colder Products Company. All rights reserved. Colder Products Company, Colder Products and CPC are registered trademarks with the US Patent & Trademark Office.

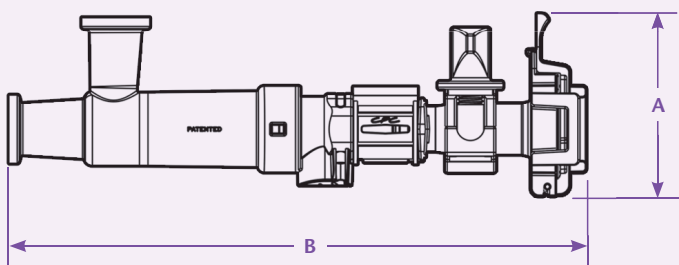


ASEPTIQUICK® G STC CONNECTOR

NEW!

Product Dimensions

- A = Height/Diameter
- B = Total Length
- C = Actuated Length



Coupling Bodies

POLYCARBONATE *Standard Version with Blue Pull Tabs*



TERMINATION
 3/4" X 3/4" SANITARY STEAM-THRU II
 with genderless AseptiQuick G Body
 3/4" X 1-1/2" SANITARY STEAM-THRU II
 with genderless AseptiQuick G Body

PART NO.	A	B	C
AQGSTC2330900	2.62	8.62	7.36
AQGSTC2331000	2.62	8.62	7.36

Note: Mates with any AseptiQuick G Connector.

Coupling Bodies

POLYCARBONATE *HT Version with White Pull Tabs*



TERMINATION
 3/4" X 3/4" SANITARY STEAM-THRU II
 with genderless AseptiQuick G Body
 3/4" X 1-1/2" SANITARY STEAM-THRU II
 with genderless AseptiQuick G Body

PART NO.	A	B	C
AQGSTC2330900HT	2.62	8.62	7.36
AQGSTC2331000HT	2.62	8.62	7.36

Note: Mates with any AseptiQuick G Connector.

FLIP-CLICK-PULL Assembly Procedure

1

Steam flows from the process equipment through the Steam-Thru II in a steam trap creating a "steam on" sterile connection.

2

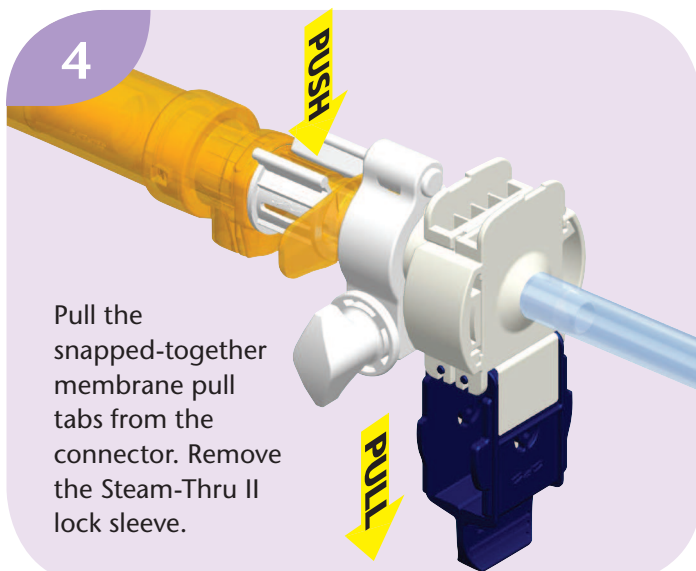
Unsnap and flip down the protective pull tab covers on each genderless AseptiQuick G connector half.

3

Align genderless AseptiQuick G couplings, push together until "Colder Click" confirmation.

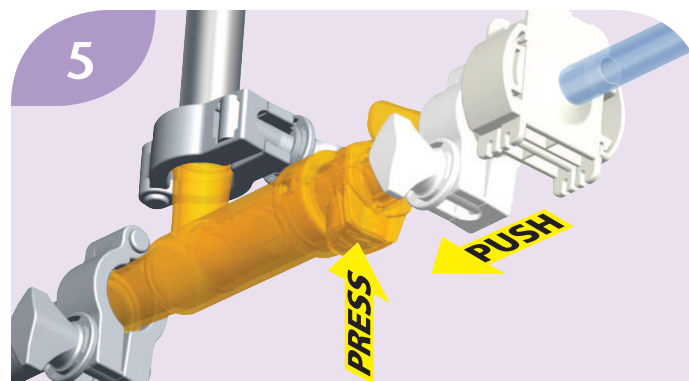
ASEPTIQUICK® G STC CONNECTOR (cont.)

4



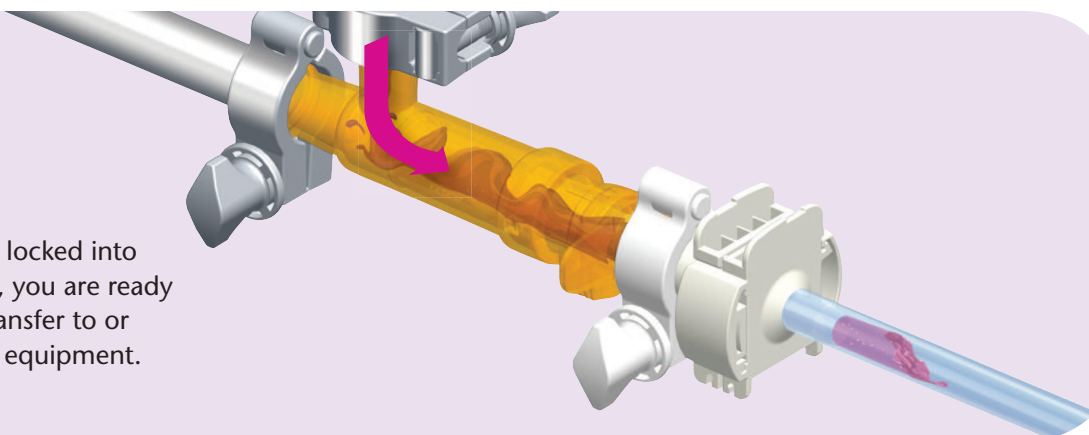
Pull the snapped-together membrane pull tabs from the connector. Remove the Steam-Thru II lock sleeve.

5



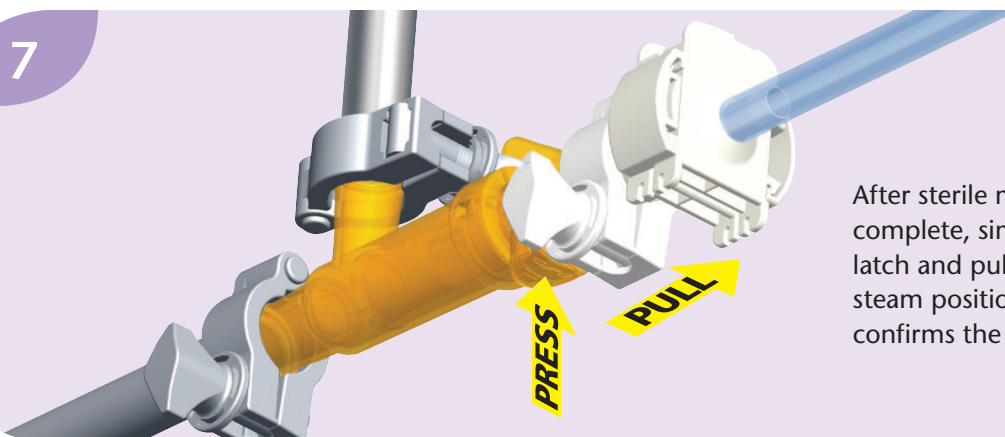
Once the genderless AseptiQuick G assembly is complete and the steam trap has been closed, simply press the thumb latch to allow the valve to be pushed into the flow position. The *"Colder Click"* confirms the transition is complete.

6



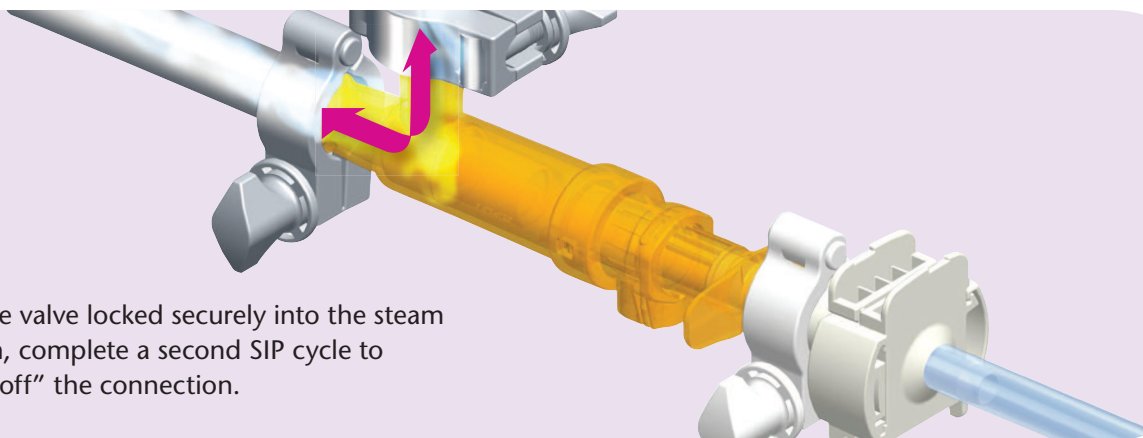
Once the valve is locked into the flow position, you are ready for sterile fluid transfer to or from the process equipment.

7



After sterile media transfer is complete, simply press the thumb latch and pull the valve back into the steam position. The *"Colder Click"* confirms the transition is complete.

7



With the valve locked securely into the steam position, complete a second SIP cycle to "steam off" the connection.



COLDER PRODUCTS COMPANY

Colder Products Company is the leader in the design and manufacture of single-use connection technology and connectors for the life sciences markets. Colder offers a wide variety of bioprocessing solutions including sterile connect, sterile disconnect, SIP connections and quick connects. Our innovative designs provide flexibility for biopharmaceutical manufacturers to easily combine multiple components, single-use or hybrid systems including process containers, tubing manifolds, transfer lines, bioreactors and other bioprocess equipment.

Robust and easy-to-use single-use connectors from Colder maintain flow path sterility and integrity while enabling biopharmaceutical manufacturers to improve production yields, decrease time-to-market and reduce costs. Colder is ISO 13485 certified and our products for bioprocessing applications are manufactured in an ISO Class 7 certified cleanroom.

For applications where reliability and sterility are a must, Connect with Colder.

Founded in St. Paul, Minn. in 1978, Colder offers more than 10,000 standard and custom products with offices in nine countries and distributor representation in North America, Europe, Asia, South America and Australia. Colder is a Dover company.



Colder Products Company®

A **DOVER** COMPANY

Colder Products Company
1001 Westgate Drive
St. Paul, Minnesota 55114
U.S.A.

Phone: 651-645-0091
Fax: 651-645-5404
Toll Free: 800-444-2474
info@colder.com
www.colder.com

Colder Products Company GmbH
Schmalweg 50
D-55252 Mainz-Kastel
Germany

Phone: +49-6134-2878-0
Fax: +49-6134-287828

cpcgmbh@colder.com
www.colder.com

Colder Products Company Limited
Flat B, 29/F., West Gate Tower,
7 Wing Hong Street,
Cheung Sha Wan.
Kowloon, Hong Kong
Phone: 852-2987-5272
Fax: 852-2987-2509

asiapacific@colder.com
www.colder.com

Distributed BY:

Colder Patent Statement: Colder Products Company takes pride in its innovative quick disconnect coupling solutions, many of which have been awarded United States and International patents. Colder Products Company has a strong tradition of leadership in the quick disconnect market, and aggressively pursues and protects its proprietary information and intellectual property. In cases where it is practical and as a benefit to its customers, Colder Products Company has licensed its proprietary technology. Please contact Colder Products to discuss your unique needs.

CPC Warranty Statement: Colder Products Company warrants its products against defects in workmanship and materials a period of 12 months from the date of sale by Colder Products Company to its initial customer (regardless of any subsequent sale of the products). This warranty is void if the product is misused, altered, tampered with or is installed or used in a manner that is inconsistent with Colder Product Company's written recommendations, specifications and/or instructions, or fails to perform due to normal wear and tear. Colder Products Company does not warrant the suitability of the product for any particular application. Determining product application suitability is solely the customer's responsibility. Colder Products Company is not liable for special, indirect, incidental, consequential or other damages including, but not limited to, loss, damage, personal injury, or any other expense directly or indirectly arising from the use of or inability to use its products either separately or in combination with other products. ALL OTHER WARRANTIES EXPRESS OR IMPLIED, WHETHER ORAL, WRITTEN OR IN ANY OTHER FORM, INCLUDING BUT NOT LIMITED TO WARRANTIES OF MERCHANTABILITY OR FITNESS FOR A PARTICULAR PURPOSE, ARE EXPRESSLY EXCLUDED.

The sole and exclusive remedy under this warranty is limited, at the option of Colder Products Company, to replacement of the defective product or an account credit in the amount of the original selling price. All allegedly defective Colder Products Company products must be returned prepaid transportation to Colder Products Company, together with information describing the product's application and performance, unless otherwise authorized in writing by Colder Products Company.

WARNING: Due to the wide variety of possible fluid media and operating conditions, unintended consequences may result from the use of this product, all of which are beyond the control of Colder. It is the user's responsibility to carefully determine and test for compatibility for use with their application. All such risks shall be assumed by the buyer.