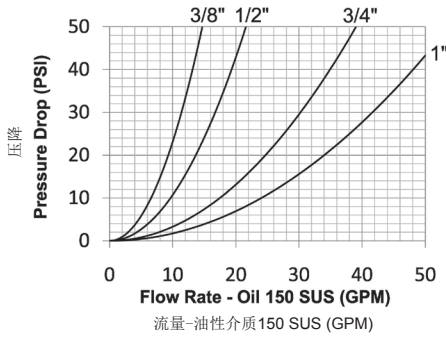


**Interchange Data:**

**互换:**

- TEMA European Interchange
- TEMA 3800, 5000, 7500, 10000 Series
- CEJN Series 525
- TEMA 欧洲互换件
- TEMA 3800, 5000, 7500, 10000系列
- CEJN 系列525



**Materials:**

**材质:**

- Machined components are manufactured using solid steel bar stock.
- Stainless steel balls, retaining rings, and springs maximize corrosion resistance and extend service life.
- Steel componentry is plated using ROHS Compliant Trivalent Chrome.
- Steel coupler sleeves are hardened to resist deformation and maximize service life.
- Steel nipples are hardened to provide heavy duty performance.
- 部件为脱氧实心钢棒料机加工制成。
- 不锈钢滚珠、定位环和制动弹簧均为不锈钢以确保最大程度的防锈，延长使用寿命。
- 钢制部件电镀使用符合ROHS的三价铬
- 钢制接头套管经硬化处理以防止其变形，并增加其使用寿命。
- 钢制软管接头经硬化处理，提高其产品性能。

**Seal Components:**

**密封件:**

- Nitrile (Buna-N) seals are standard, providing a temperature range of -40°F to +250°F (-40°C to +121°C).
- Couplers have a redundant O-Ring sealing system (dual O-Rings with inner PTFE back-up ring).
- Valve seals are crimped in place to maintain integrity during excessive flow conditions and pressurized connection.
- 标配丁腈橡胶密封件，温度范围为-40°F 至 +250°F (-40°C至+121°C)
- 接头配有双重O形圈密封系统 (双O形圈/内置聚四氟乙烯 支撑环)
- 阀门密封件的卷皱部分是为了在过流和增压情况下保证其密闭性。

**TR-SERIES**  
Page 48 - 49

**Rated Pressure Chart:**

**额定压力表:**

Body Size 尺寸	R-Series TEMA European Interchange (Connected) R-系列 TEMA 欧洲标准互换部件 (连接件)			
	Steel Coupler/Plug 钢制接头/堵盖			
	Maximum Working 最大工作压力		Burst 爆破压力	
	PSI	Bar	PSI	Bar
3/8"	5,000	345	20,000	1,400
1/2"	4,000	275	16,500	1,100
3/4"	4,000	275	15,400	1,000
1"	3,200	220	12,800	900

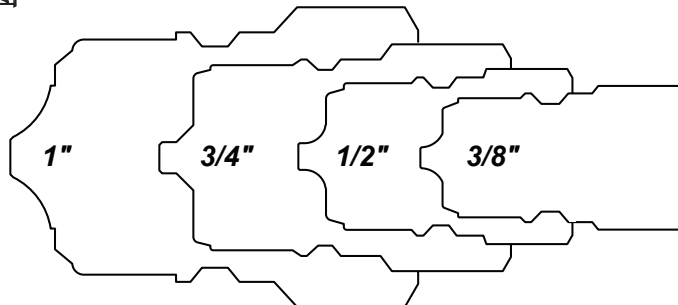
**Technical Specifications:**

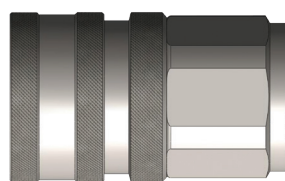
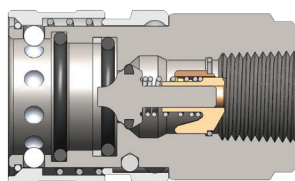
**技术规格:**

Body Size 尺寸	Interchange Standards 互换标准				Functional Parameters 功能参数				
	U.S. Military 美国军用	U.S. Government 美国官方	International Standards 国际标准	ANSI/NFPA Standards ANSI/NFPA标准	Locking Ball Quantity 定位钢球数量	Air Inclusion 含气	Fluid Loss 液体流失	Vacuum 真空 Inch HG	Flow 流量 ΔP = 22 PSI
3/8"	-	-	-	-	9	2.8cc	1.9cc	28	10 GPM
1/2"	-	-	-	-	9	3.9cc	3.1cc	28	15 GPM
3/4"	-	-	-	-	9	10.5cc	10.1cc	28	26 GPM
1"	-	-	-	-	9	14.7cc	14.2cc	28	36 GPM

**TR-Series Interchange Profiles**

**TR 互换部件外形图**

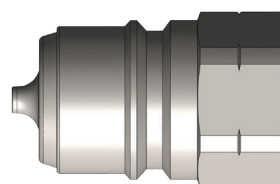
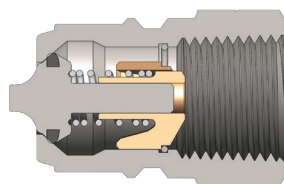




Body Size 尺寸	TR-Series TEMA European Interchange Coupler (Female Threads) TR-系列 TEMA 欧洲标准互换接头 (内螺纹)										
	Part Detail 部件信息			Length 长度		Maximum OD 最大OD		Hex Inch 六角外径	Weight 重量 Lb	Package Qty 包装数量	
	Part Number 部件编号	Threads 螺纹	Material 材质	Inch	mm	Inch	mm			Bag 袋装	Box 盒装
3/8"	3TRF3	3/8" - 18 NPTF	steel 钢	2.52	64.0	1.38	35.0	30	0.51	10	50
3/8"	3TRBF3	3/8" - 19 BSPP	steel 钢	2.52	64.0	1.38	35.0	30	0.51	10	50
1/2"	4TRF4	1/2" - 14 NPTF	steel 钢	2.62	66.5	1.57	40.0	36	0.80	5	25
1/2"	4TRBF4	1/2" - 14 BSPP	steel 钢	2.62	66.5	1.57	40.0	36	0.80	5	25
3/4"	6TRF6	3/4" - 14 NPTF	steel 钢	3.35	85.0	2.05	52.0	41	1.40	-	10
3/4"	6TRBF6	3/4" - 14 BSPP	steel 钢	3.35	85.0	2.05	52.0	41	1.40	-	10
1"	8TRF8	1" - 11 1/2 NPTF	steel 钢	3.90	99.0	2.56	65.0	55	1.95	-	10
1"	8TRBF8	1" - 11 BSPP	steel 钢	3.90	99.0	2.56	65.0	55	1.95	-	10

TR-SERIES

Page 48 - 49



Body Size 尺寸	TR-Series TEMA European Interchange Nipple (Female Threads) TR-系列 TEMA 欧洲标准互换软管接头 (内螺纹)										
	Part Detail 部件信息			Length 长度		Maximum OD 最大OD		Hex Inch 六角外径	Weight 重量 Lb	Package Qty 包装数量	
	Part Number 部件编号	Threads 螺纹	Material 材质	Inch	mm	Inch	mm			Bag 袋装	Box 盒装
3/8"	TR3F3	3/8" - 18 NPTF	steel 钢	1.59	40.5	1.00	25.4	22	0.16	10	50
3/8"	TR3BF3	3/8" - 19 BSPP	steel 钢	1.59	40.5	1.00	25.4	22	0.16	10	50
1/2"	TR4F4	1/2" - 14 NPTF	steel 钢	1.63	41.5	1.23	31.1	27	0.26	5	25
1/2"	TR4BF4	1/2" - 14 BSPP	steel 钢	1.63	41.5	1.23	31.1	27	0.26	5	25
3/4"	TR6F6	3/4" - 14 NPTF	steel 钢	2.20	56.0	1.63	41.5	36	0.46	-	10
3/4"	TR6BF6	3/4" - 14 BSPP	steel 钢	2.20	56.0	1.63	41.5	36	0.46	-	10
1"	TR8F8	1" - 11 1/2 NPTF	steel 钢	2.48	63.0	2.09	53.0	46	0.80	-	10
1"	TR8BF8	1" - 11 BSPP	steel 钢	2.48	63.0	2.09	53.0	46	0.80	-	10

Body Size 尺寸	TR-Series TEMA European Coupler Seal Kits V-系列 Snap-Tite H/IH 互换接头 维修套件							
	Part Detail 部件信息			Seal Kit Contents 密封套件			Package Qty 包装数量	
	Part Number 部件编号	Coupler Style 接头类型	Seal Material 密封材料				Bag 袋装	Box 盒装
3/8"	3TR-SKIT	all 所有	Nitrile 丁腈橡胶	Two O-Rings and PTFE Back-up 2个O形圈和聚四氟乙烯支撑环			25	200
1/2"	4TR-SKIT	all 所有	Nitrile 丁腈橡胶	Two O-Rings and PTFE Back-up 2个O形圈和聚四氟乙烯支撑环			25	200
3/4"	6TR-SKIT	all 所有	Nitrile 丁腈橡胶	Two O-Rings and PTFE Back-up 2个O形圈和聚四氟乙烯支撑环			25	200
1"	8TR-SKIT	all 所有	Nitrile 丁腈橡胶	Two O-Rings and PTFE Back-up 2个O形圈和聚四氟乙烯支撑环			25	200

